



 wallace

Benstede Court, Hoddesdon, EN11 8NX |
£285,000 | Leasehold

Benstede Court, Hoddesdon, EN11 8NX

Rarely available, this one-bedroom second-floor retirement apartment is offered chain-free and occupies a prime position within walking distance of Hoddesdon's vibrant town centre. Uniquely, this apartment features a valuable second reception room, providing superb versatility as a dining room, study, hobbies space, or occasional guest area — a feature seldom found in similar properties. Set within a highly regarded and sociable development, the home offers beautifully maintained accommodation comprising a bright and spacious lounge/diner, modern fitted kitchen with integrated appliances, double bedroom with fitted wardrobes, and a contemporary shower room/WC. Residents enjoy a strong sense of community, supported by a welcoming communal lounge, well-kept gardens, and a convenient laundry room. With double glazing throughout and an impressive energy rating of B, this apartment offers both comfort and efficiency in equal measure. This property combines independence, practicality, and sociable living — a rare opportunity for those seeking a peaceful retirement home with flexible space in a highly desirable central location.

Key features

- Rarely available layout with second reception room — ideal as a dining room, study, or hobbies space
- Bright lounge/diner with pleasant outlook
- Double bedroom with fitted wardrobes
- Excellent communal facilities including residents' lounge, laundry room, and gardens
- Offered chain-free for a straightforward purchase, not subject to probate
- Modern fitted kitchen with integrated appliances
- Contemporary shower room/WC
- Sought-after development within walking distance of Hoddesdon town centre



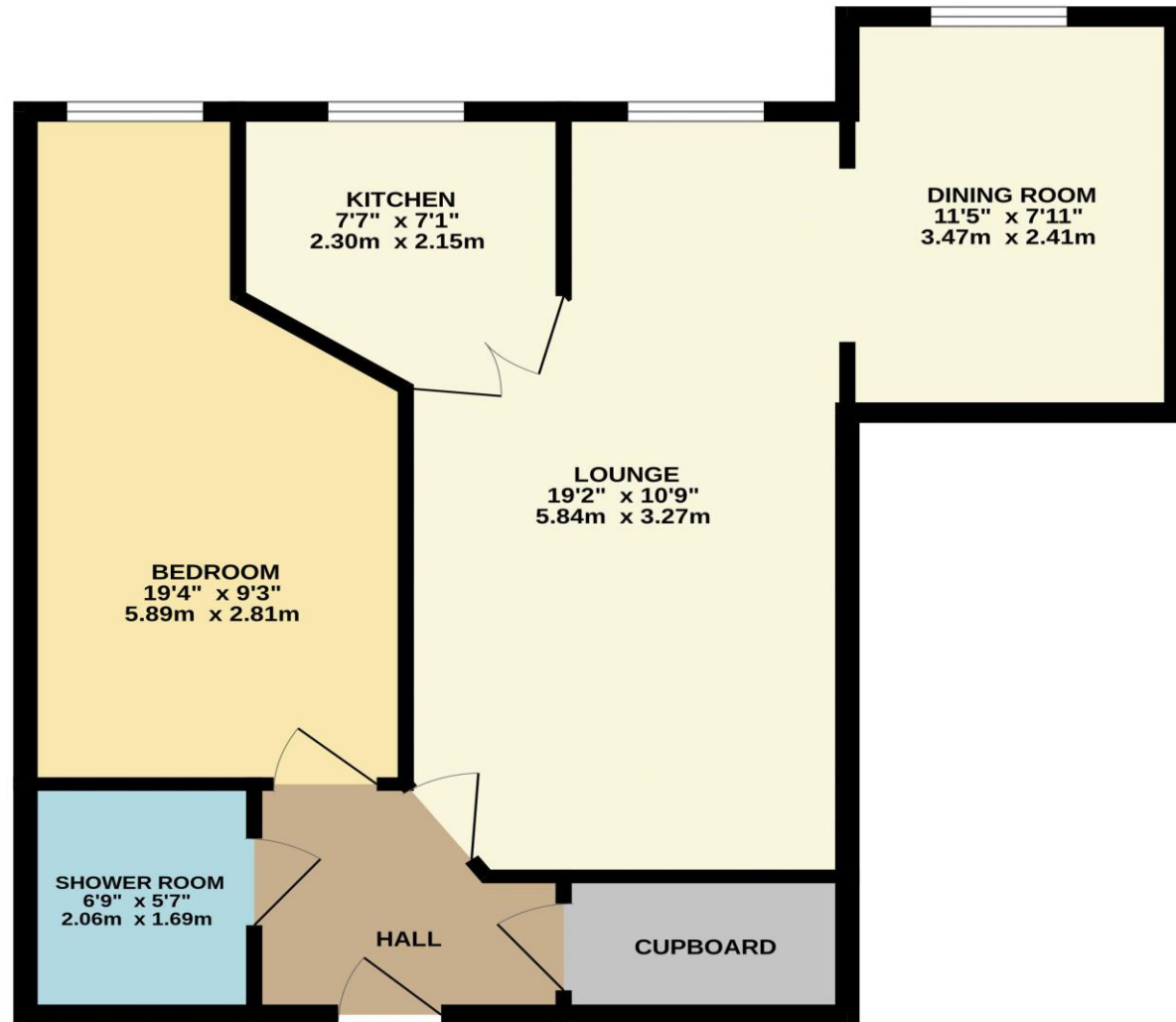
 **paulwallace**
estate agents

hoddesdon@paulwallace.co.uk

01992 466471







TOTAL FLOOR AREA : 608 sq.ft. (56.5 sq.m.) approx.

Whilst every attempt has been made to ensure the accuracy of the floorplan contained here, measurements of doors, windows, rooms and any other items are approximate and no responsibility is taken for any error, omission or mis-statement. This plan is for illustrative purposes only and should be used as such by any prospective purchaser. The services, systems and appliances shown have not been tested and no guarantee as to their operability or efficiency can be given.

Made with Metropix ©2025

Registered Address: Unit 3 The Brookfield Centre, Cheshunt, Herts, EN8 0NN Company Registration Number: OC414280 | VAT Number: 276958046©2022 Paul Wallace Group LLP trading as Paul Wallace Estate Agents




Paul Wallace Estate Agents

70 High Street
Hoddesdon
Hertfordshire
EN11 8ET

 01992 466471

 hoddesdon@paulwallace.co.uk

 www.paulwallace.co.uk



Opening Times

Mon	9am to 6.30pm
Tues	9am to 6.30pm
Wed	9am to 6.30pm
Thurs	9am to 6.30pm
Fri	9am to 6.30pm
Sat	9am to 5.00pm
Sun	Closed



Agents Note: Whilst every care has been taken to prepare these sales particulars, they are for guidance purposes only. All measurements are approximate and are for general guidance purposes only and whilst every care has been taken to ensure their accuracy, they should not be relied upon. Potential buyers are advised to recheck the measurements.